

Monthly Surveillance Report

Saint Louis County Department of Public Health - Division of Communicable Disease Prevention

Report Month: August

Report Date: September 03, 2024

Report Summary

Thirteen pertussis cases were reported among Saint Louis County residents in August 2024, bringing the year-to-date (YTD) total to 62 cases.

Fifty-six Saint Louis County residents initiated the rabies post-exposure prophylaxis (RPEP) series in August, following a similarly high volume of RPEP initiations in July. To date, 240 residents have initiated the RPEP series in 2024 - a 124 percent increase from the five-year median of 107 initiations. Three animals have tested positive for rabies in Saint Louis County in 2024, all of them bats.

Seven cyclosporiasis cases were reported in August, bringing the year-to-date total to 16 cases - only slightly less than the YTD median of 17 cases. Increased cyclosporiasis incidence is typical for summer - nearly all cases are reported between May and August.

Four confirmed legionellosis cases were identified among county residents in August. Case investigations are ongoing, but no common exposures have been identified as yet.

For more information on sexually transmitted infections (STIs), please visit our website at: <https://stlouiscountymo.gov/st-louis-county-departments/public-health/health-data-and-statistics/communicable-disease-reports/sexually-transmitted-infections/>. If you need to reach us at any time outside of normal business hours, please note the following:

To report a public health emergency in Saint Louis County: During normal business hours - Monday through Friday 8:00 a.m. - 5:00 p.m., call Saint Louis County DPH at (314) 615-1630.

At all other times: call (314) 615-7677 or fax (314) 615-7643.

To report any Saint Louis area Hazardous Material concern: Call 911.

Data Notes: This report includes confirmed and probable cases; suspect cases are not included. These data are provisional as of September 03, 2024.

Table 1: **Summary Table**

Condition	Year to Date			Monthly Totals		
	5-year Median	2024 Cases	% Change	Jun	Jul	Aug
Type: Bite Exposure						
Animal bites	275	321	16.7	44	67	44
Rabies post-exposure prophylaxis (RPEP)	107	240	124.3	29	53	56
Rabies, animal	3	3	0.0	2	1	0
Total		564		75	121	100
Type: Enterics						
Campylobacteriosis	72	74	2.8	18	12	6
Cryptosporidiosis	17	12	-29.4	0	3	3
Cyclosporiasis	17	16	-5.9	2	7	7
E. coli O157:H7	3	7	133.3	0	5	1
E. coli shiga toxin (non-O157)	17	21	23.5	7	1	5
Giardiasis	17	27	58.8	5	8	0
Listeriosis	2	3	50.0	2	1	0
Salmonellosis	86	87	1.2	17	18	12
Shigellosis	12	22	83.3	4	5	3
Typhoid fever	1	0	-100.0	0	0	0
Vibriosis	3	0	-100.0	0	0	0
Yersiniosis	9	7	-22.2	0	2	1
Total		276		55	62	38
Type: Mycobacterial						
Latent TB infection (LTBI)	273	171	-37.4	15	12	7

Table 1: **Summary Table**

Condition	Year to Date			Monthly Totals		
	5-year Median	2024 Cases	% Change	Jun	Jul	Aug
Nontuberculosis mycobacteria (NTM)	86	87	1.2	12	8	11
TB disease	11	13	18.2	2	0	1
Total		271		29	20	19
Type: Sexually Transmitted						
Chlamydia	4,259	4,070	-4.4	491	587	469
Gonorrhea	2,072	1,602	-22.7	174	276	238
Syphilis, total	371	340	-8.4	39	41	25
Total		6,012		704	904	732
Type: Systemic						
Botulism	0	0		0	0	0
Brucellosis	0	0		0	0	0
Coccidioidomycosis	0	0		0	0	0
Creutzfeld-Jakob disease (CJD)	0	0		0	0	0
Haemophilus influenzae, invasive	9	18	100.0	0	5	0
Legionellosis	14	18	28.6	2	5	4
Mpox	0	6		1	2	0
Strep Pneumoniae, invasive	33	61	84.8	7	4	6
Toxic shock syndrome (Strep or Staph)	0	0		0	0	0
Total		103		10	16	10
Type: Vaccine-Preventable						
COVID-19	21,032	17,491	-16.8	1,299	3,080	4,170

Table 1: **Summary Table**

Condition	Year to Date			Monthly Totals		
	5-year Median	2024 Cases	% Change	Jun	Jul	Aug
Diphtheria	0	0		0	0	0
Measles	0	0		0	0	0
Meningococcal disease	1	1	0.0	0	1	0
Mumps	0	0		0	0	0
Pertussis	3	62	1,966.7	6	14	13
Rubella	0	0		0	0	0
Tetanus	0	0		0	0	0
Varicella (chickenpox)	6	4	-33.3	1	0	0
Total		17,558		1,306	3,095	4,183
Type: Vectorborne						
Anaplasmosis	1	1	0.0	0	0	0
Chikungunya virus	0	0		0	0	0
Dengue fever	0	6		1	1	0
Ehrlichiosis	29	42	44.8	18	15	1
Lyme	0	0		0	0	0
Malaria	2	1	-50.0	0	0	0
Rocky mountain spotted fever	3	4	33.3	1	1	0
Tularemia	0	0		0	0	0
West nile virus	1	1	0.0	0	1	0
Yellow fever	0	0		0	0	0
Zika virus	0	0		0	0	0

Table 1: **Summary Table**

Condition	Year to Date			Monthly Totals		
	5-year Median	2024 Cases	% Change	Jun	Jul	Aug
Total		55		20	18	1
Type: Viral Hepatitis						
Hepatitis A, acute	3	1	-66.7	0	0	0
Hepatitis B, acute	4	3	-25.0	0	0	0
Hepatitis B, chronic	63	101	60.3	8	18	10
Hepatitis B, prenatal	10	10	0.0	2	3	0
Hepatitis C, acute	5	4	-20.0	1	1	0
Hepatitis C, chronic	217	150	-30.9	20	9	23
Total		269		31	31	33

Campylobacteriosis: 6 new case(s) of Campylobacteriosis reported August, 2024

Fig. 1. Cumulative Campylobacteriosis Cases
By Month of Report

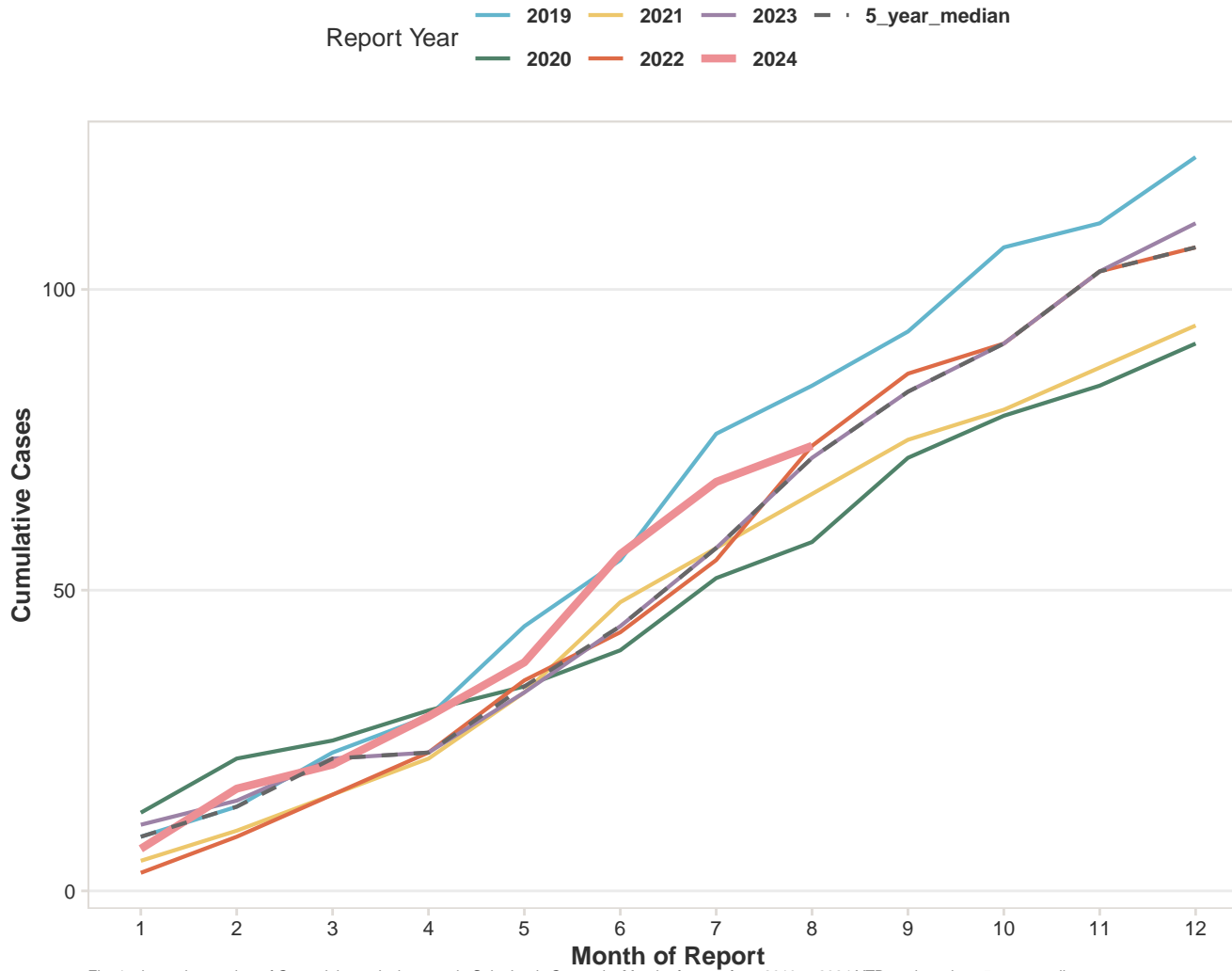


Fig. 1. shows the number of Campylobacteriosis cases in Saint Louis County by Month of report from 2019 to 2024 YTD, and previous 5-year median.

Cryptosporidiosis: 3 new case(s) of Cryptosporidiosis reported August, 2024

Fig. 2. Cumulative Cryptosporidiosis Cases
By Month of Report

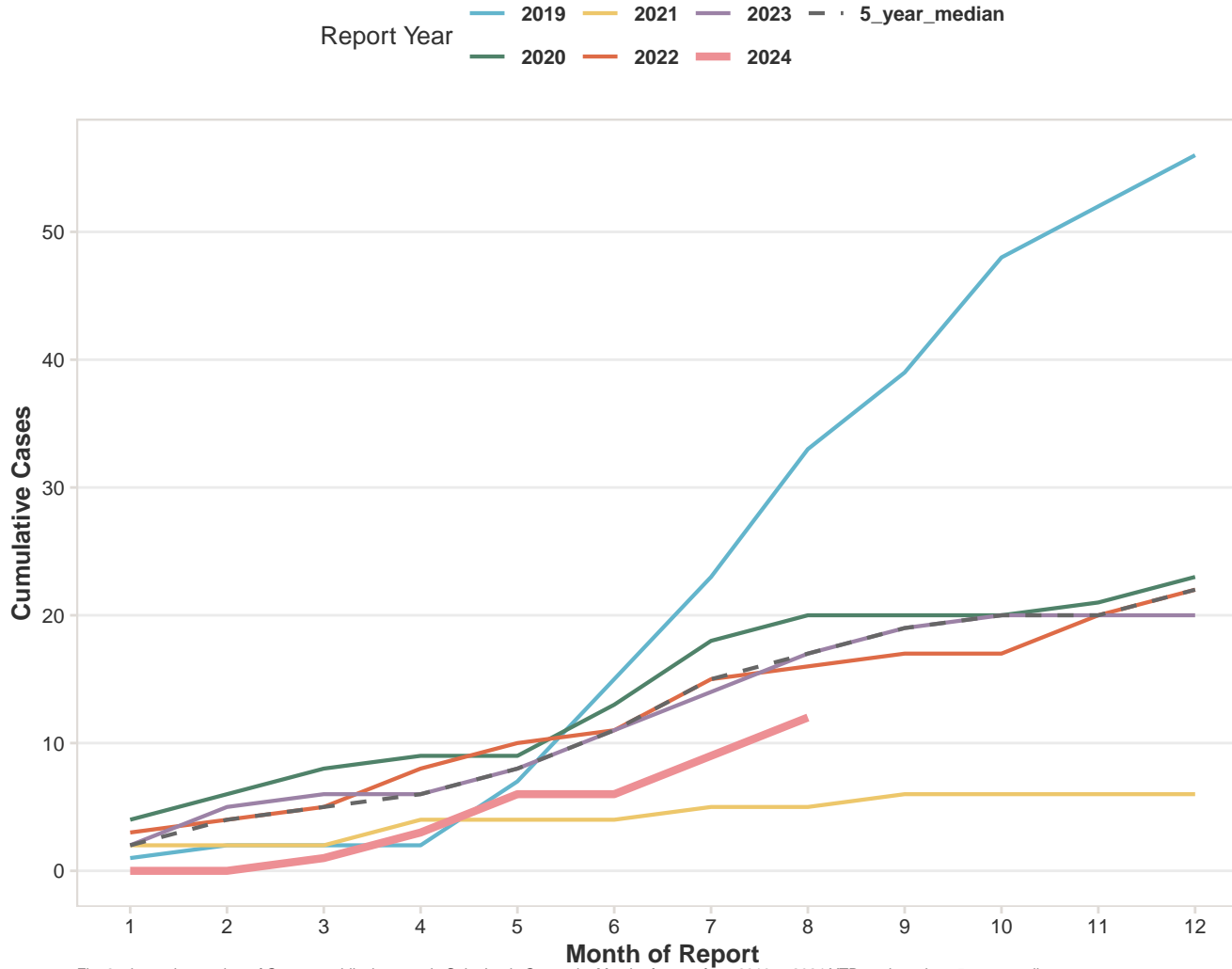


Fig. 2. shows the number of Cryptosporidiosis cases in Saint Louis County by Month of report from 2019 to 2024 YTD, and previous 5-year median.

Cyclosporiasis: 7 new case(s) of Cyclosporiasis reported August, 2024

Fig. 3. Cumulative Cyclosporiasis Cases
By Month of Report

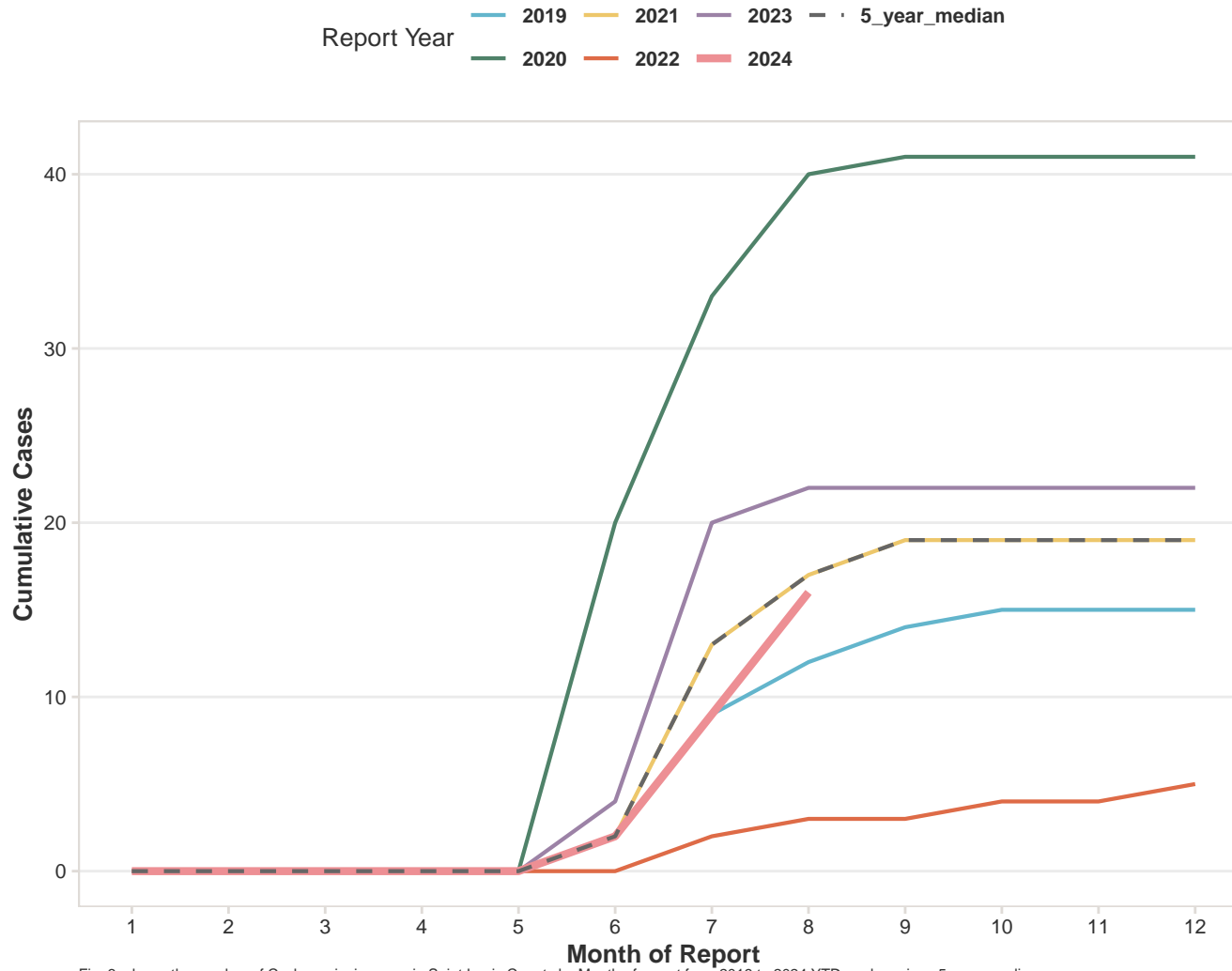


Fig. 3. shows the number of Cyclosporiasis cases in Saint Louis County by Month of report from 2019 to 2024 YTD, and previous 5-year median.

E. coli O157:H7: 1 new case(s) of E. coli O157:H7 reported August, 2024

Fig. 4. Cumulative E. coli O157:H7 Cases
By Month of Report

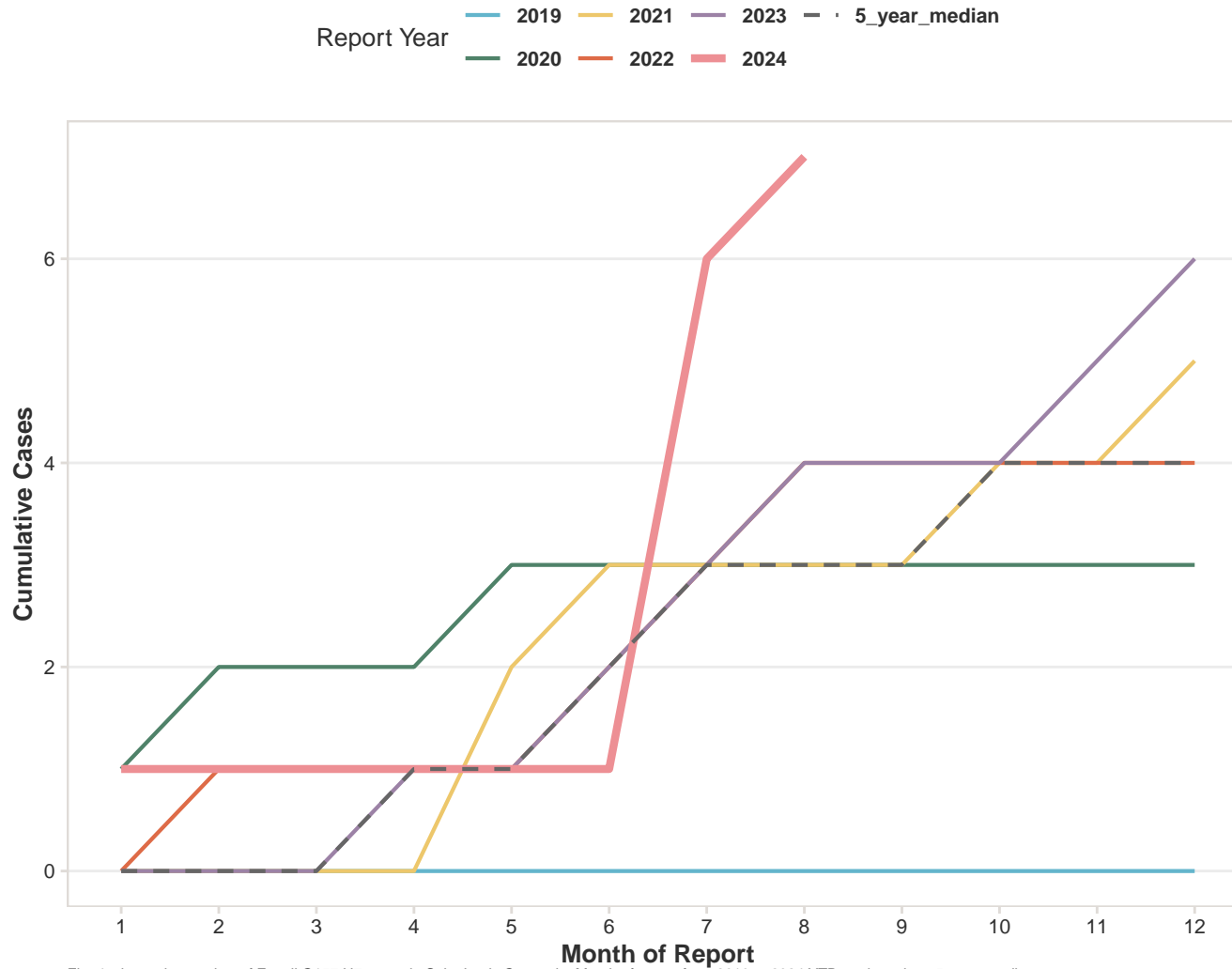


Fig. 4. shows the number of E. coli O157:H7 cases in Saint Louis County by Month of report from 2019 to 2024 YTD, and previous 5-year median.

E. coli shiga toxin (non-O157): 5 new case(s) of E. coli shiga toxin (non-O157) reported August, 2024

Fig. 5. Cumulative E. coli shiga toxin (non-O157) Cases
By Month of Report

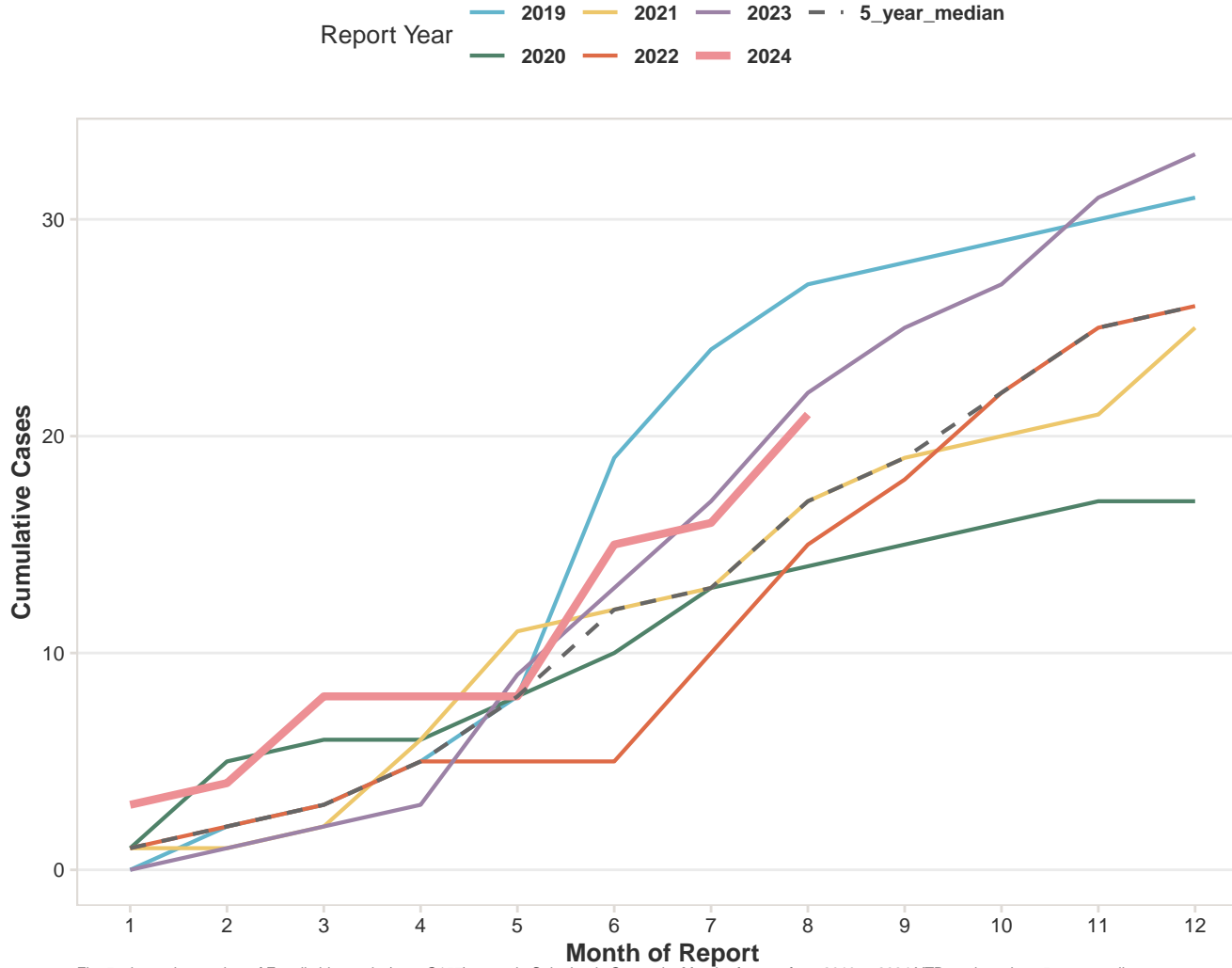


Fig. 5. shows the number of E. coli shiga toxin (non-O157) cases in Saint Louis County by Month of report from 2019 to 2024 YTD, and previous 5-year median.

Ehrlichiosis: 1 new case(s) of Ehrlichiosis reported August, 2024

Fig. 6. Cumulative Ehrlichiosis Cases
By Month of Report

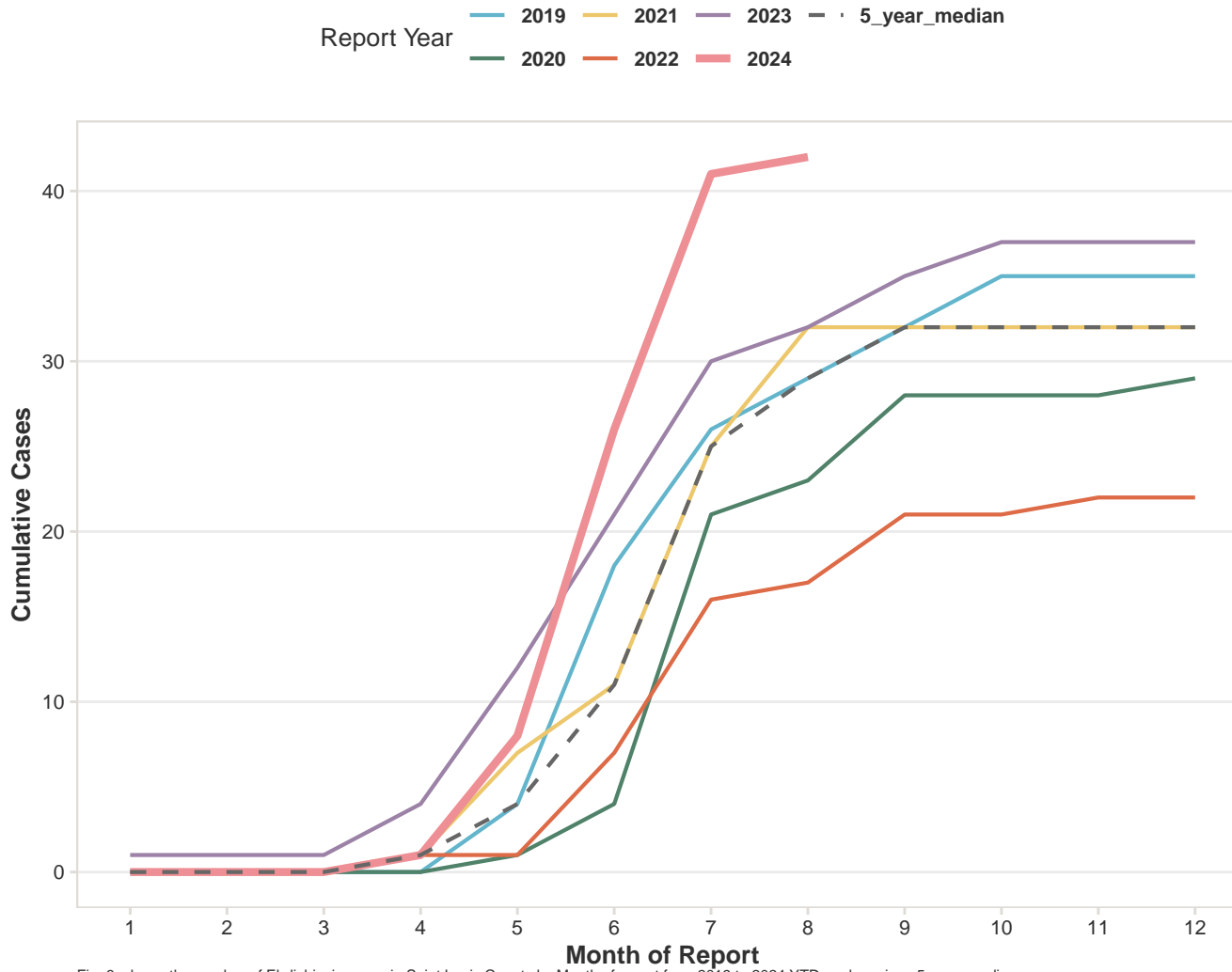


Fig. 6. shows the number of Ehrlichiosis cases in Saint Louis County by Month of report from 2019 to 2024 YTD, and previous 5-year median.

Hepatitis A, acute: 0 new case(s) of Hepatitis A, acute reported August, 2024

Fig. 7. Cumulative Hepatitis A, acute Cases
By Month of Report

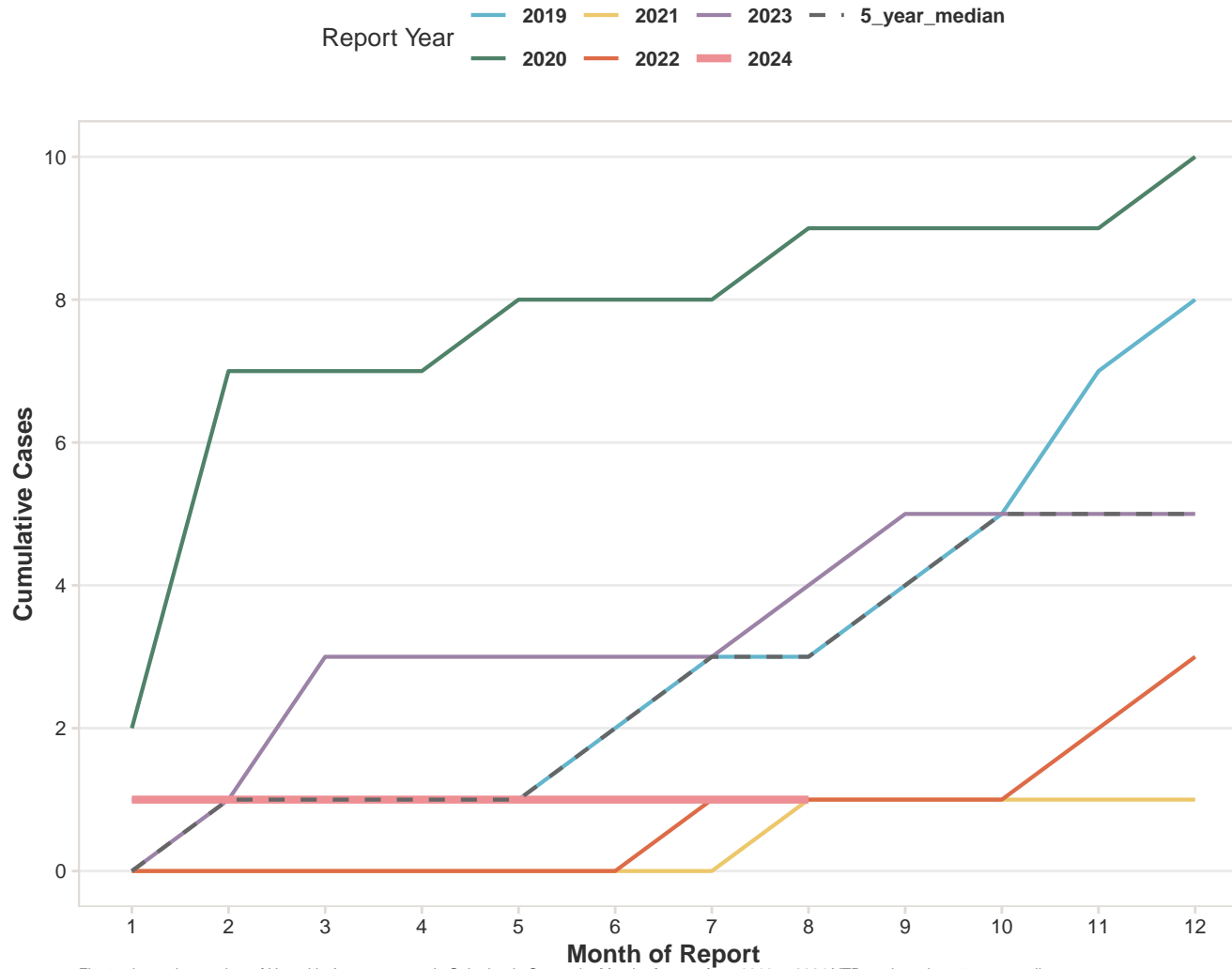


Fig. 7. shows the number of Hepatitis A, acute cases in Saint Louis County by Month of report from 2019 to 2024 YTD, and previous 5-year median.

Hepatitis B, acute: 0 new case(s) of Hepatitis B, acute reported August, 2024

Fig. 8. Cumulative Hepatitis B, acute Cases
By Month of Report

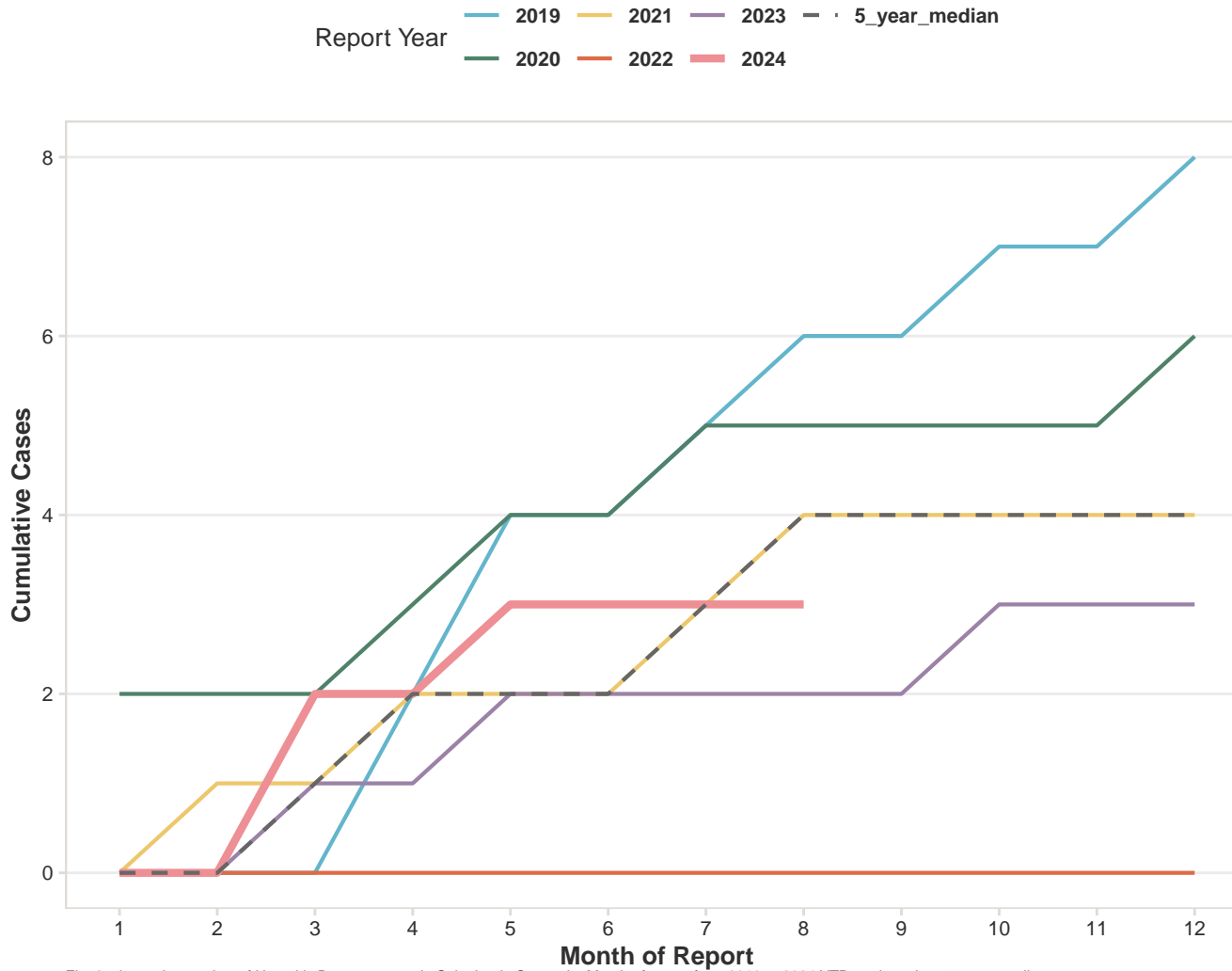


Fig. 8. shows the number of Hepatitis B, acute cases in Saint Louis County by Month of report from 2019 to 2024 YTD, and previous 5-year median.

Hepatitis C, acute: 0 new case(s) of Hepatitis C, acute reported August, 2024

Fig. 9. Cumulative Hepatitis C, acute Cases
By Month of Report

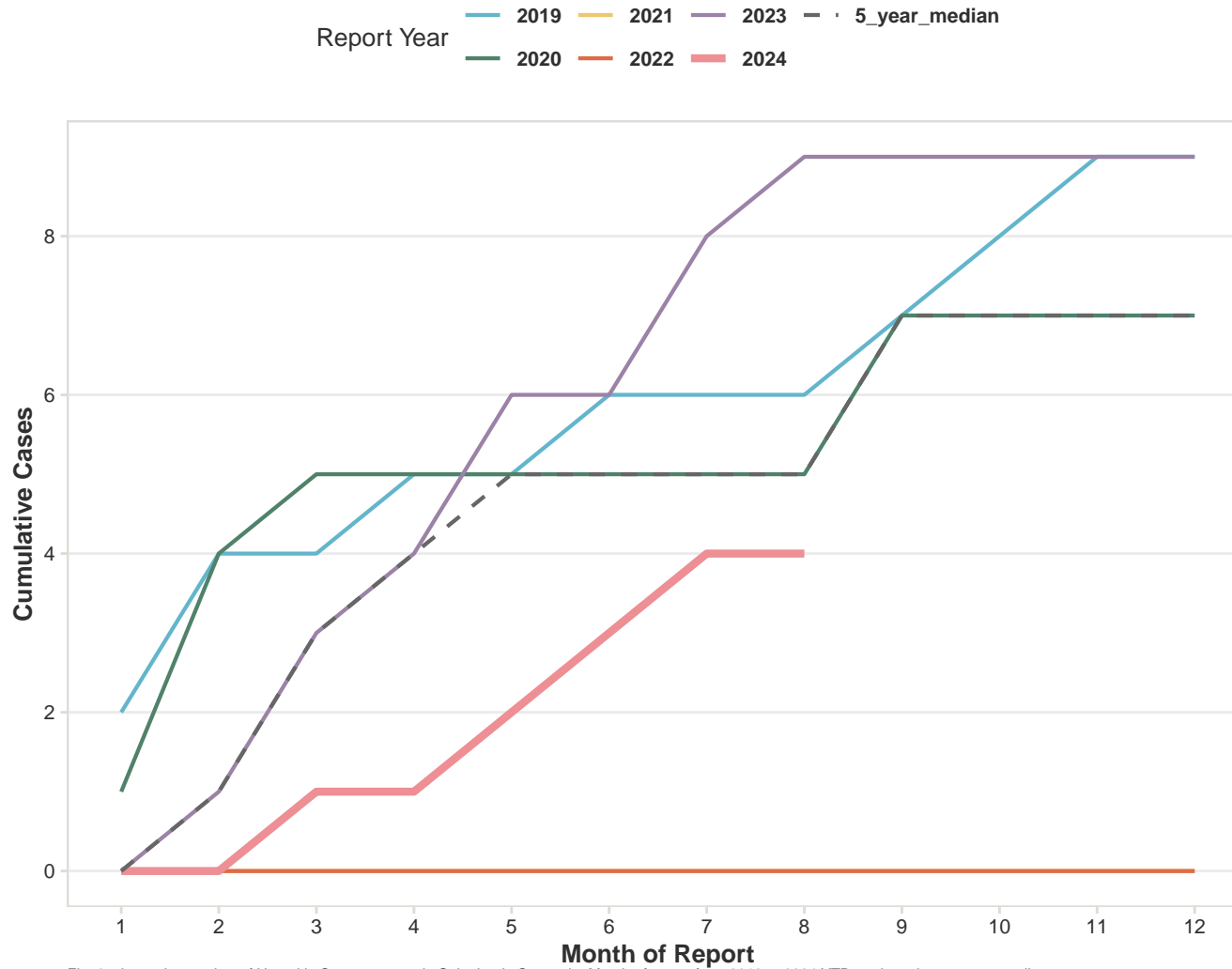


Fig. 9. shows the number of Hepatitis C, acute cases in Saint Louis County by Month of report from 2019 to 2024 YTD, and previous 5-year median.

Legionellosis: 4 new case(s) of Legionellosis reported August, 2024

Fig. 10. Cumulative Legionellosis Cases
By Month of Report

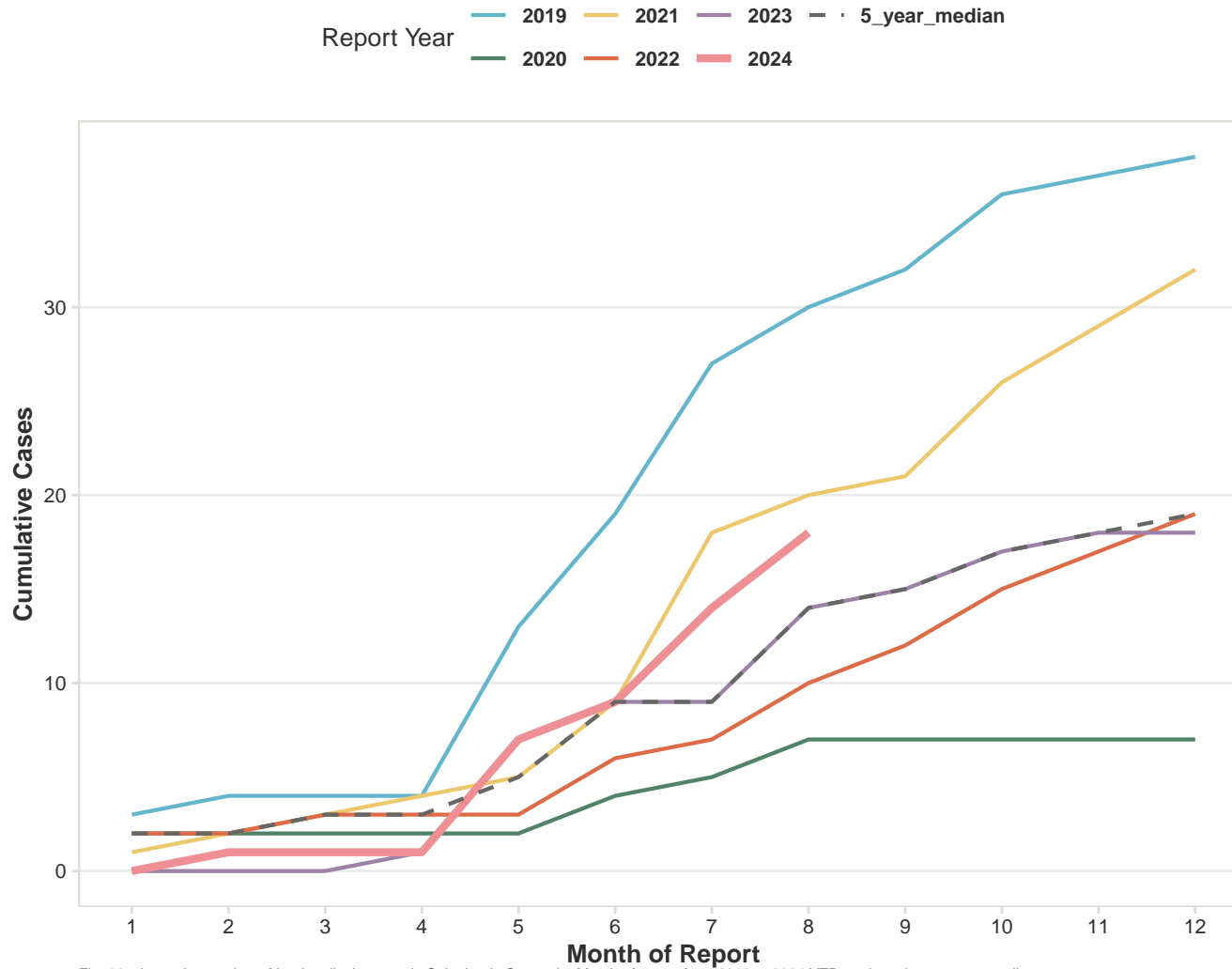


Fig. 10. shows the number of Legionellosis cases in Saint Louis County by Month of report from 2019 to 2024 YTD, and previous 5-year median.

Pertussis: 13 new case(s) of Pertussis reported August, 2024

Fig. 11. Cumulative Pertussis Cases
By Month of Report

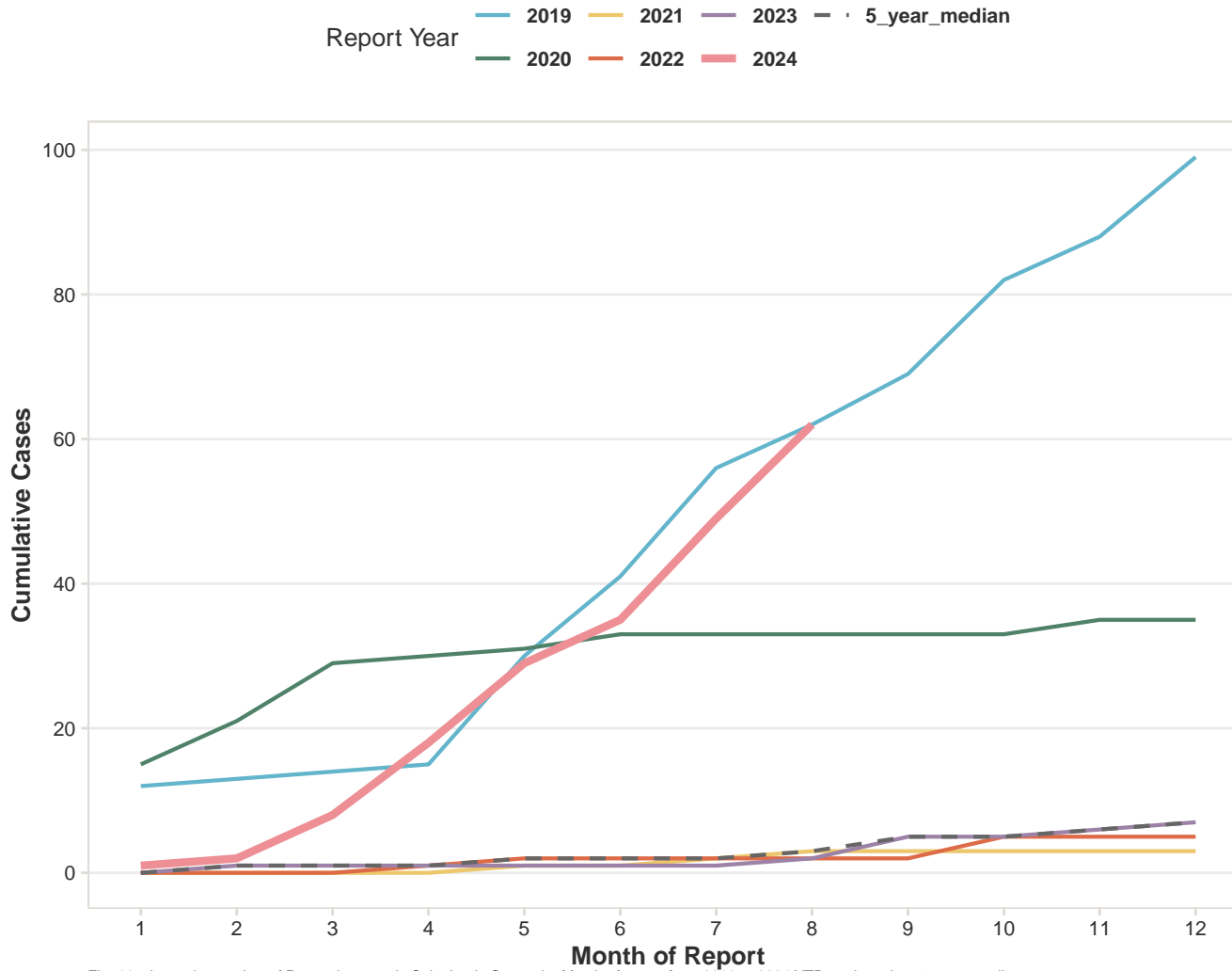


Fig. 11. shows the number of Pertussis cases in Saint Louis County by Month of report from 2019 to 2024 YTD, and previous 5-year median.

Rabies, animal: 0 new case(s) of Rabies, animal reported August, 2024

Fig. 12. Cumulative Rabies, animal Cases
By Month of Report

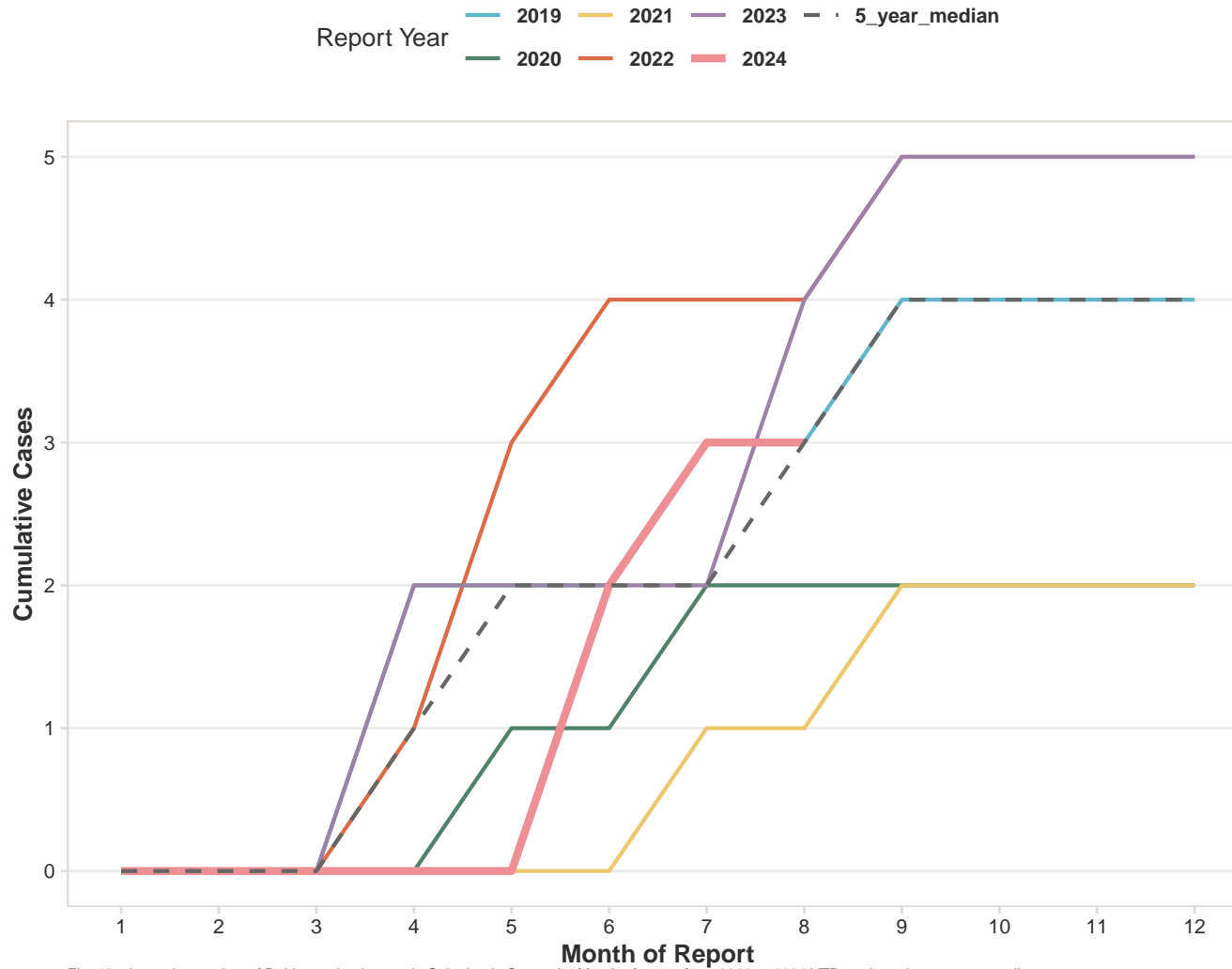


Fig. 12. shows the number of Rabies, animal cases in Saint Louis County by Month of report from 2019 to 2024 YTD, and previous 5-year median.

Salmonellosis: 12 new case(s) of Salmonellosis reported August, 2024

Fig. 13. Cumulative Salmonellosis Cases
By Month of Report

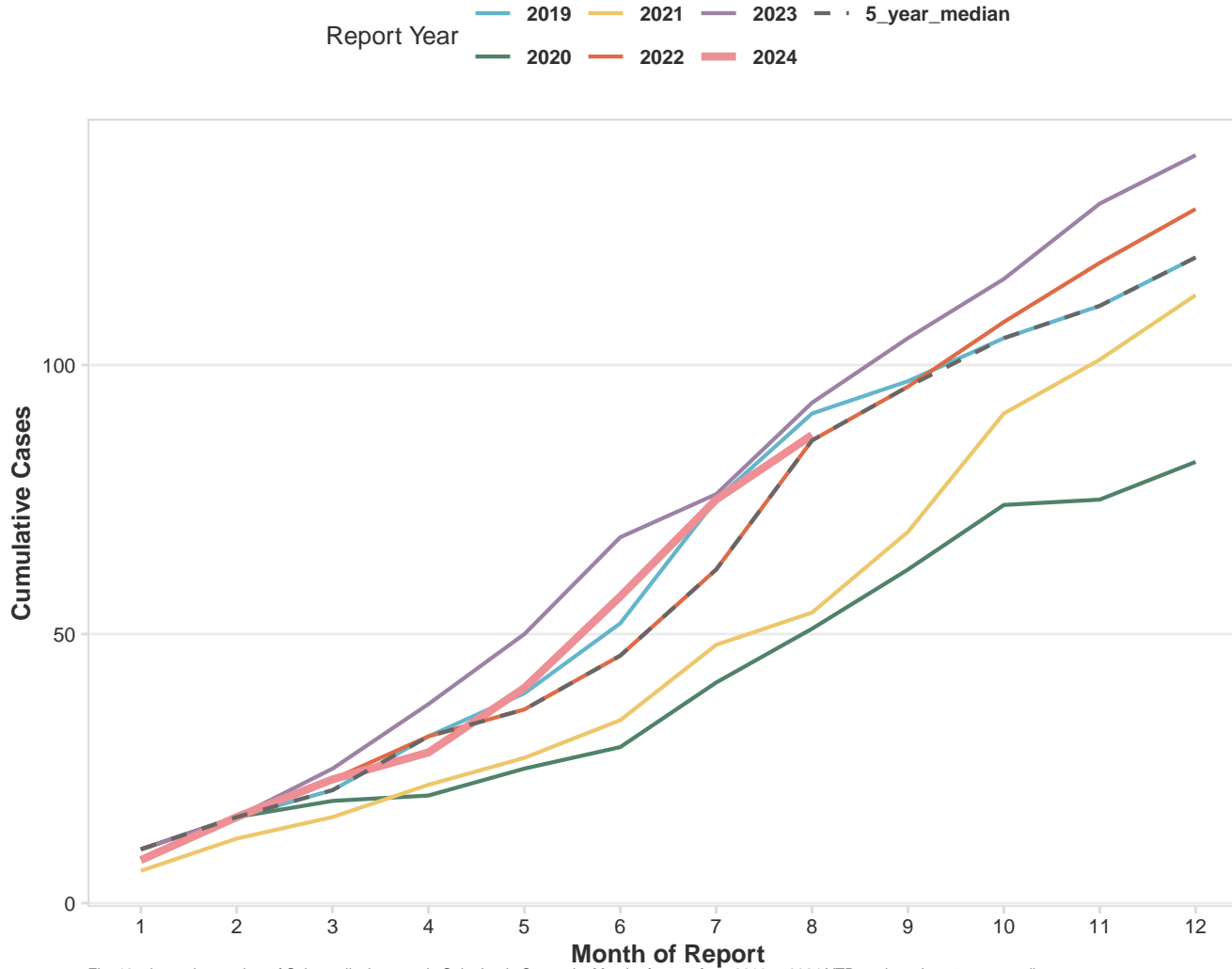


Fig. 13. shows the number of Salmonellosis cases in Saint Louis County by Month of report from 2019 to 2024 YTD, and previous 5-year median.

Shigellosis: 3 new case(s) of Shigellosis reported August, 2024

Fig. 14. Cumulative Shigellosis Cases
By Month of Report

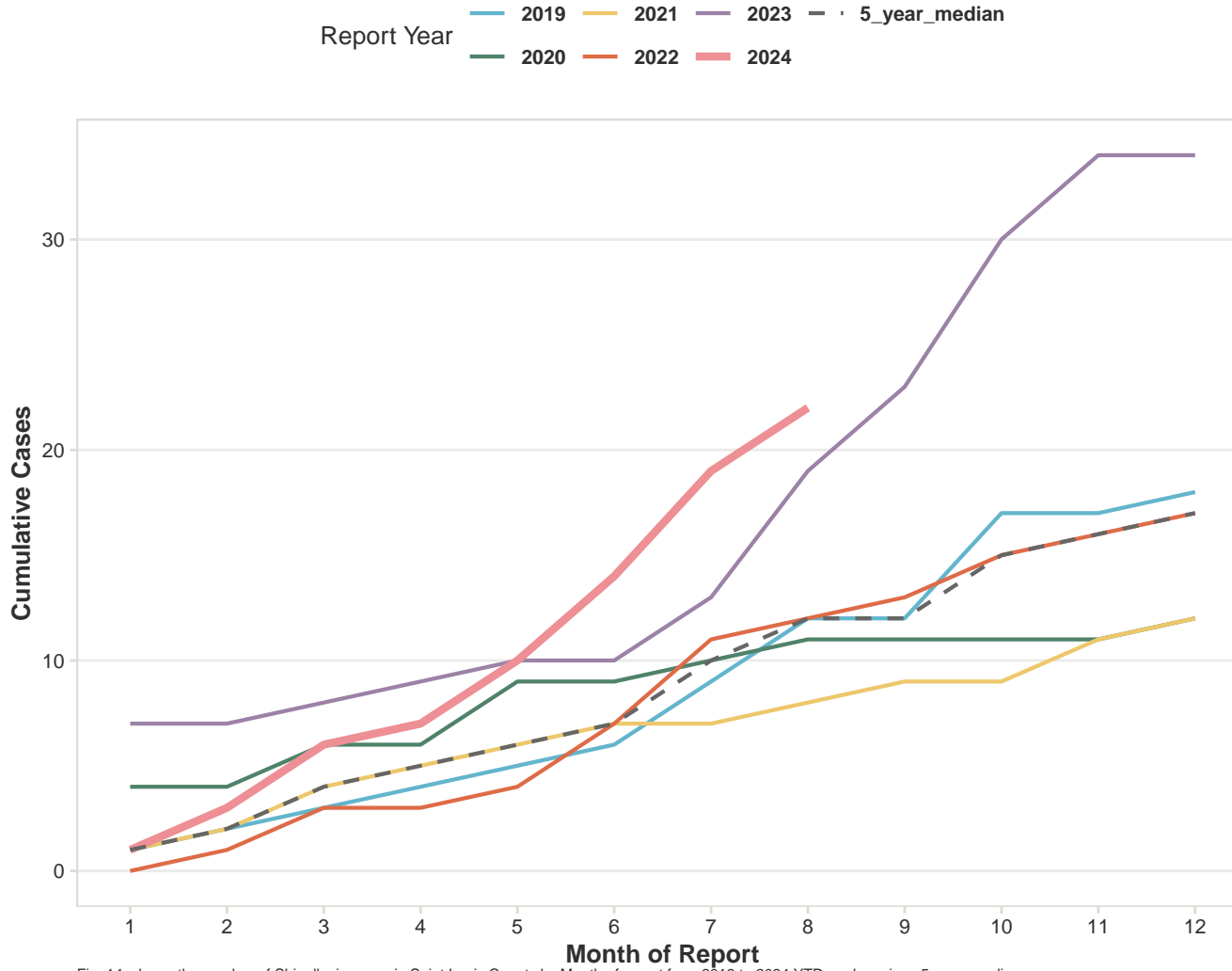


Fig. 14. shows the number of Shigellosis cases in Saint Louis County by Month of report from 2019 to 2024 YTD, and previous 5-year median.

TB disease: 1 new case(s) of TB disease reported August, 2024

Fig. 15. Cumulative TB disease Cases
By Month of Report

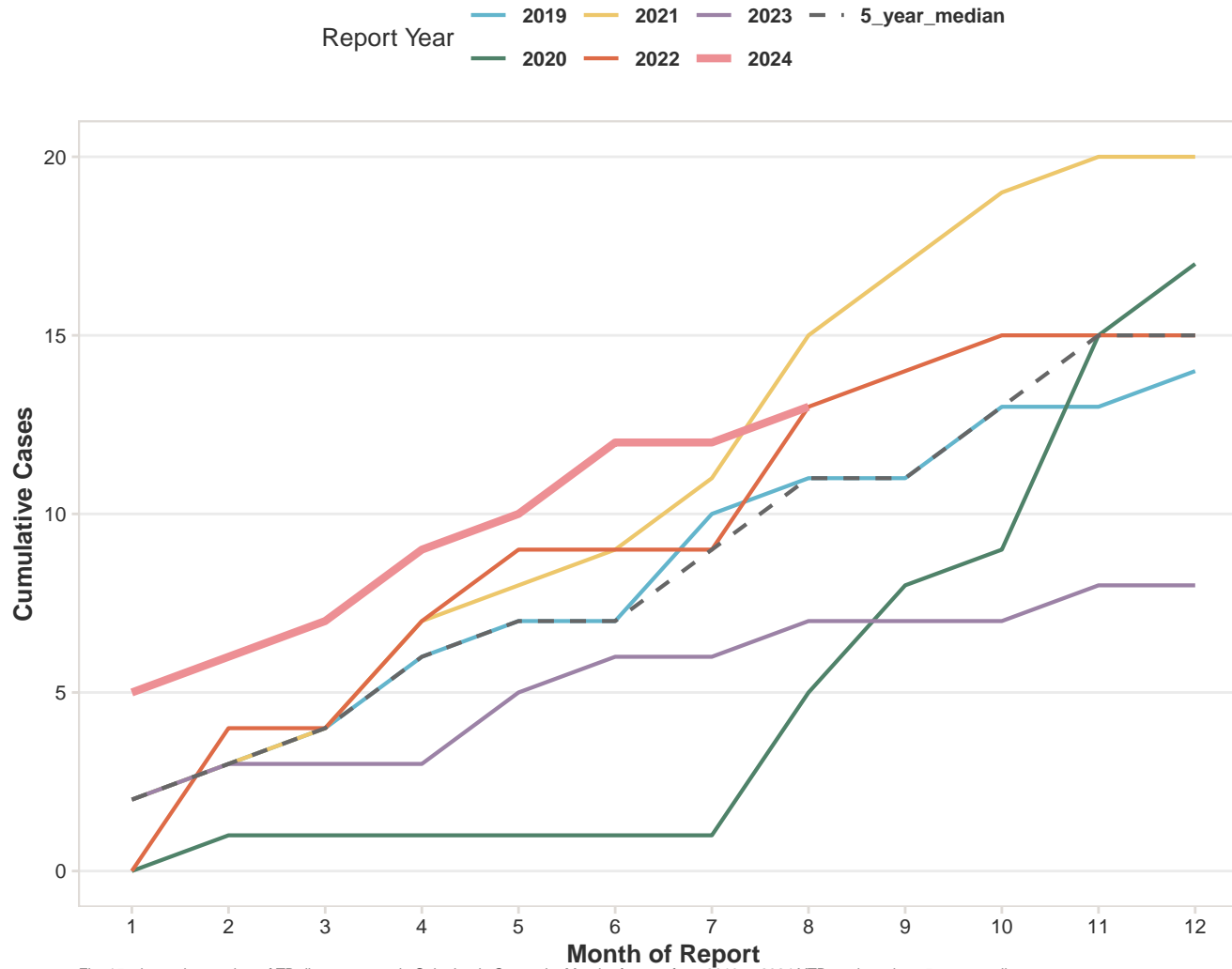


Fig. 15. shows the number of TB disease cases in Saint Louis County by Month of report from 2019 to 2024 YTD, and previous 5-year median.

West nile virus: 0 new case(s) of West nile virus reported August, 2024

Fig. 16. Cumulative West nile virus Cases
By Month of Report

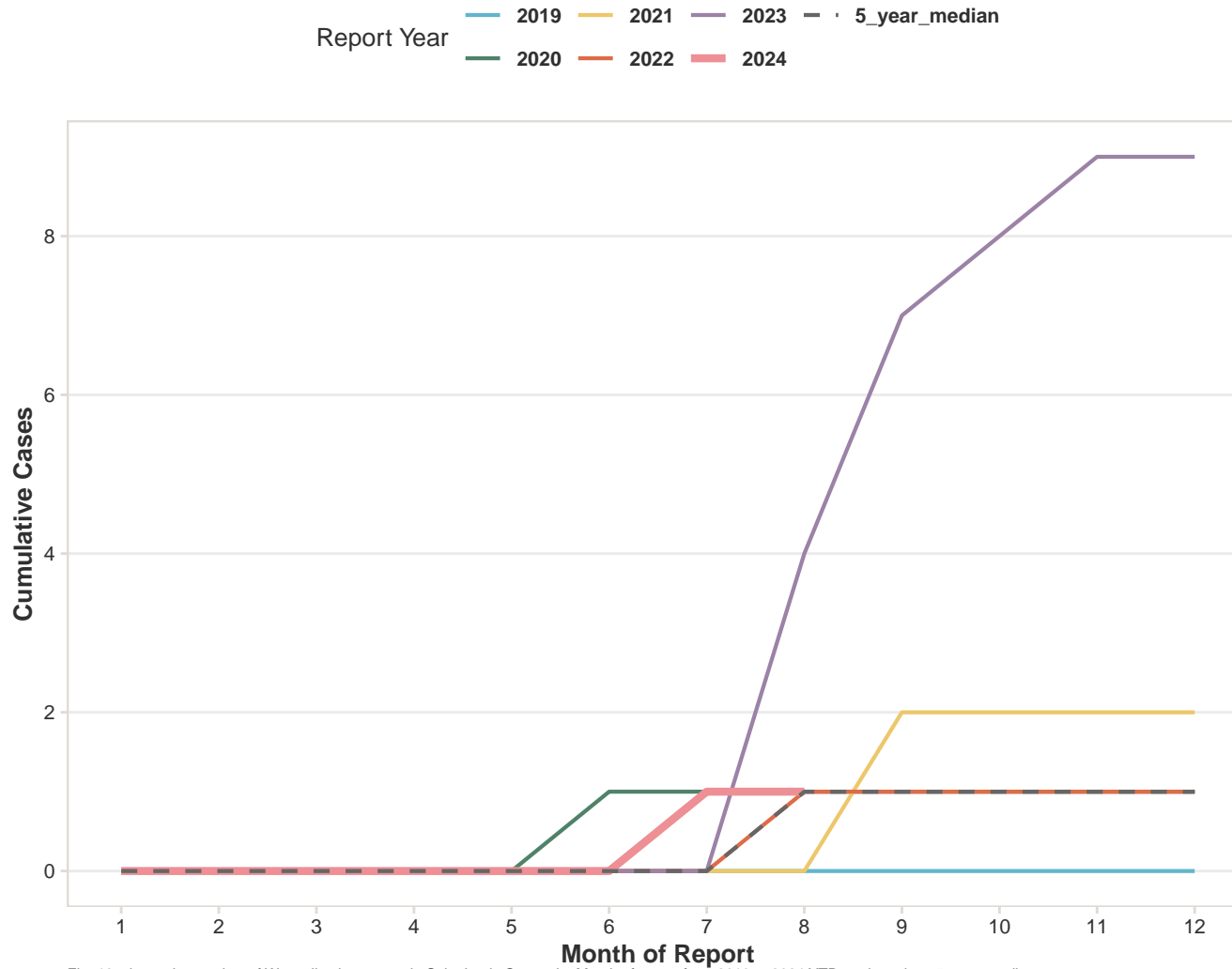


Fig. 16. shows the number of West nile virus cases in Saint Louis County by Month of report from 2019 to 2024 YTD, and previous 5-year median.

Varicella (chickenpox): 0 new case(s) of Varicella (chickenpox) reported August, 2024

Fig. 17. Cumulative Varicella (chickenpox) Cases
By Month of Report

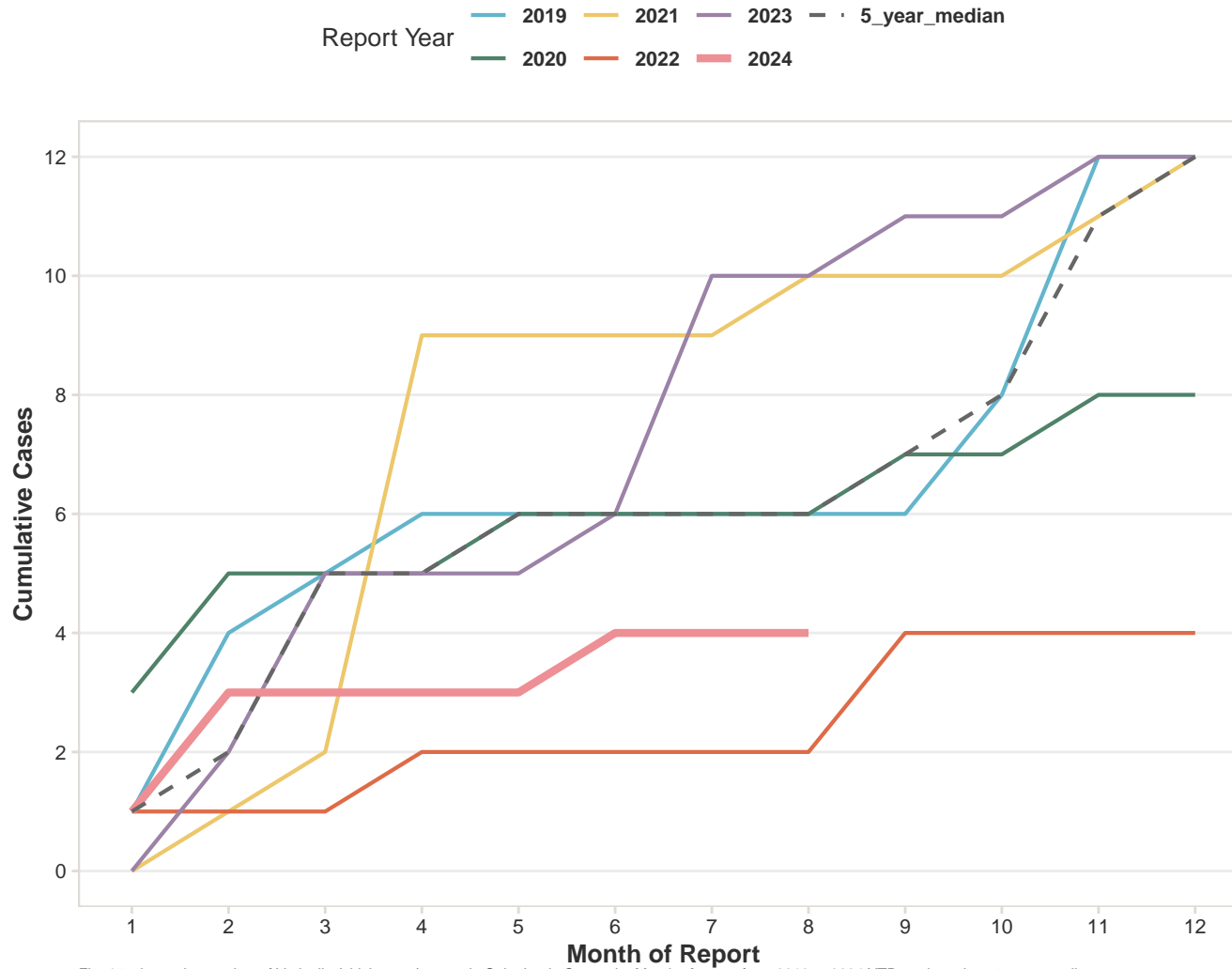


Fig. 17. shows the number of Varicella (chickenpox) cases in Saint Louis County by Month of report from 2019 to 2024 YTD, and previous 5-year median.